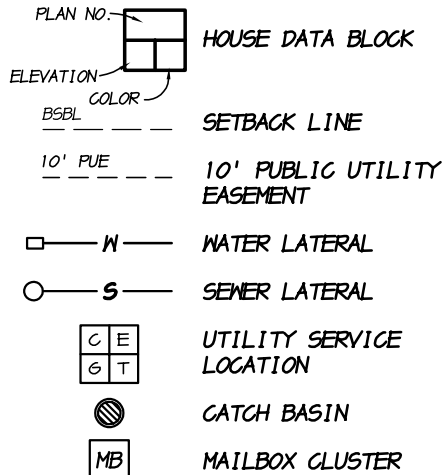


LEGEND



LOT COVERAGE

PLAN AREA = 1,464 SF
 LOT AREA = 4,407 SF
 $1,464 \text{ SF} / 4,407 \text{ SF} = 0.33$
 33% < 50% MAX.

This set of plans MUST be kept on the job at all time and it is unlawful to make any changes or alterations on same without written permission from City of Modesto Building Safety

REVIEWED FOR CODE COMPLIANCE

BY ggomes

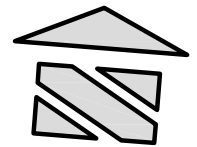
06/21/2022

The stamping of this plan SHALL NOT be held to permit or to be an approval of the violation of any provisions of any Ordinance or Law. Occupancy of structure not permitted until after final approval.

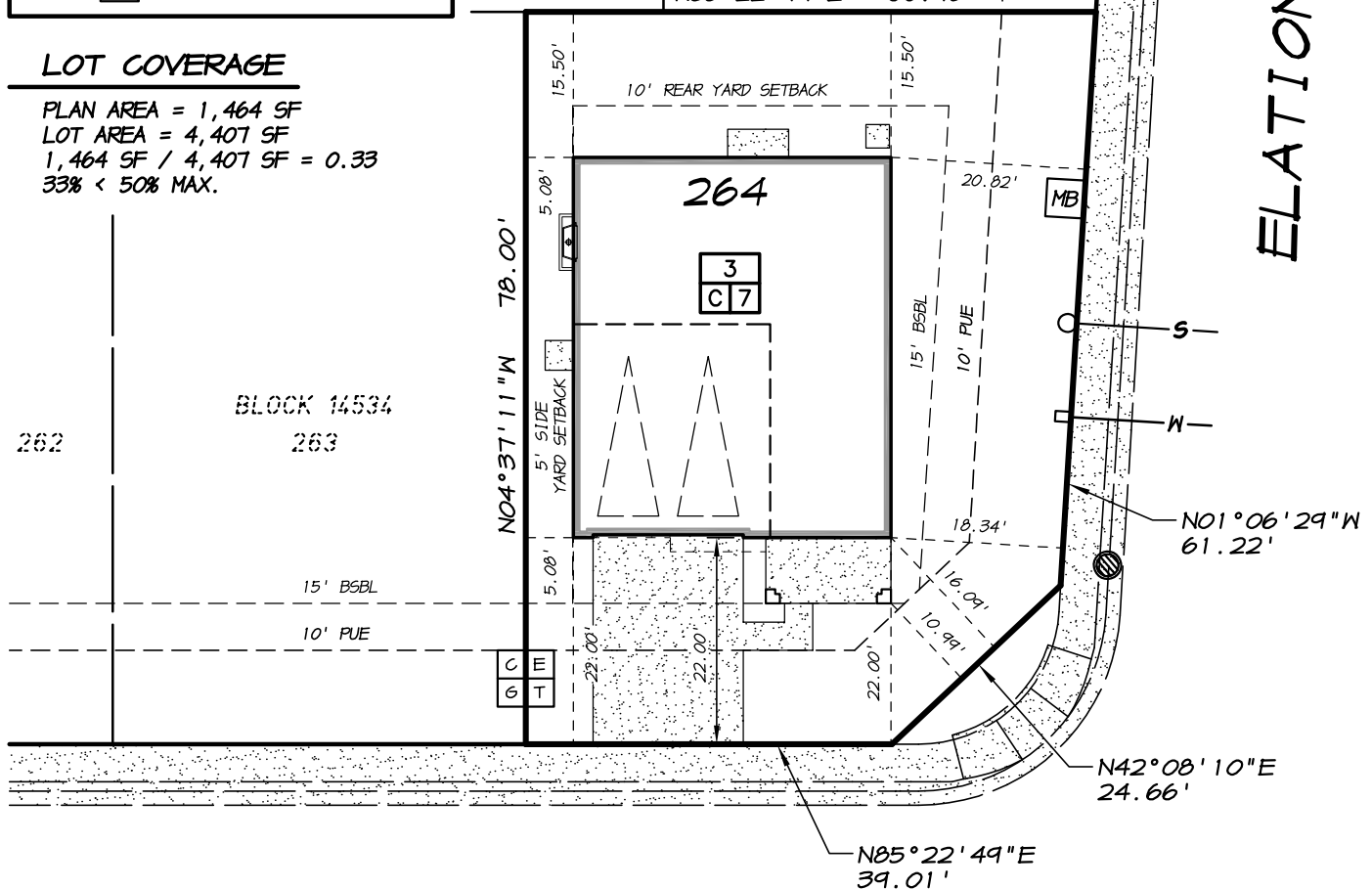
BLD2022-02104

BLOCK 14534
244

BLOCK 14534
243



ELATION LANE



LUMINOUS STREET

This plot plan is intended to graphically show the dimensional relationship between the house foundation and the adjacent property lines in order to conform with local ordinances for the purpose of building permit issuance. All construction shall be in accordance with City standards. This plot plan may not reflect as-built conditions. Contractor shall verify with City on approved improvement plans and record drawings. Public utilities, sanitary sewer and domestic water service locations, street lights, fire hydrants, catch basins, air conditioning condenser pad locations and house options shown on this plot plan may vary.

DRAWN: P. A. S.

DATE: 1/27/22 2:00

SCALE: 1"=20'

JOB #: 1220-18

DWG: V5 PPLAN

PLOT PLAN - LOT 264
4,407 SQ. FT.

1501 LUMINOUS STREET

EPIC AT FOUNDERS POINT

MODESTO

CALIFORNIA



**ASSOCIATED
ENGINEERING
GROUP**

4206 TECHNOLOGY DRIVE, SUITE 4, MODESTO, CA 95356
 PHONE: (209) 545-3390 FAX: (209) 545-3875 www.assoceng.com